

B-square/book/2



B-square/book/2 detail

B-SQUARE/BOOK/2

Design: Aktiva, 2007

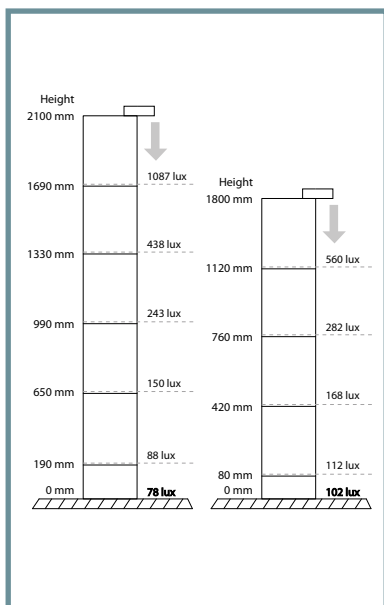
An economical one-piece plug-in lighting system designed to fit all static metal bookshelves. Sizes and fixings tailored to shelving manufacturers' requirements. Light output can cover both shelves and aiseways. Capital costs, installation costs and running costs minimised.

FEATURES

- Excellent bookshelf and aisleway fluorescent illumination with High Output T5 lamping
- Low profile one-piece presentation
- Plug-in units minimise electrical installation costs
- Passive microwave detector option reduces running costs

OPTIONS

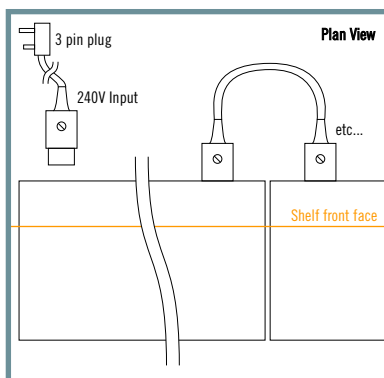
- /dim1 analogue 1-10v dimmable electronic ballast
- /dim2 digital/DALI dimmable electronic ballast
- /emergency 3 hours maintained
- /length as per manufacturers' module length
- /...W t5 24 - 80 Watt High Output t5 fluorescent lamp
- /WakeUp1 microwave timing/sensitivity adjustable presence detector for economy control of area or aisleway installations.
- /WakeUp2 passive infrared ray (PIR) timing/sensitivity adjustable presence detector for economy control of area or aisleway installations.



B-square/book/2 lighting test



B-square/book/2



Plug-in system between modules



WakeUp - microwave presence detector